

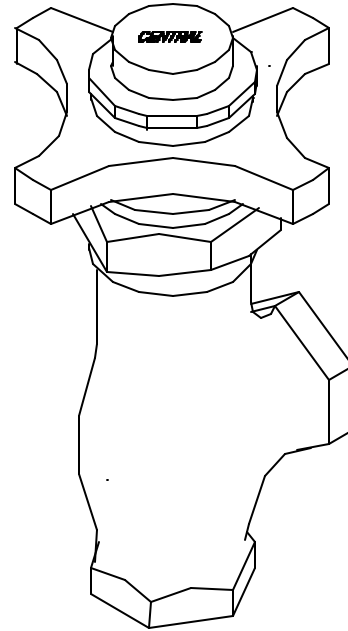
Central Brass

MANUFACTURING COMPANY
2950 East 55th St. Cleveland, Ohio 44127
Phone: (216) 883-0220 Fax: (216) 883-0875
www.CentralBrass.com

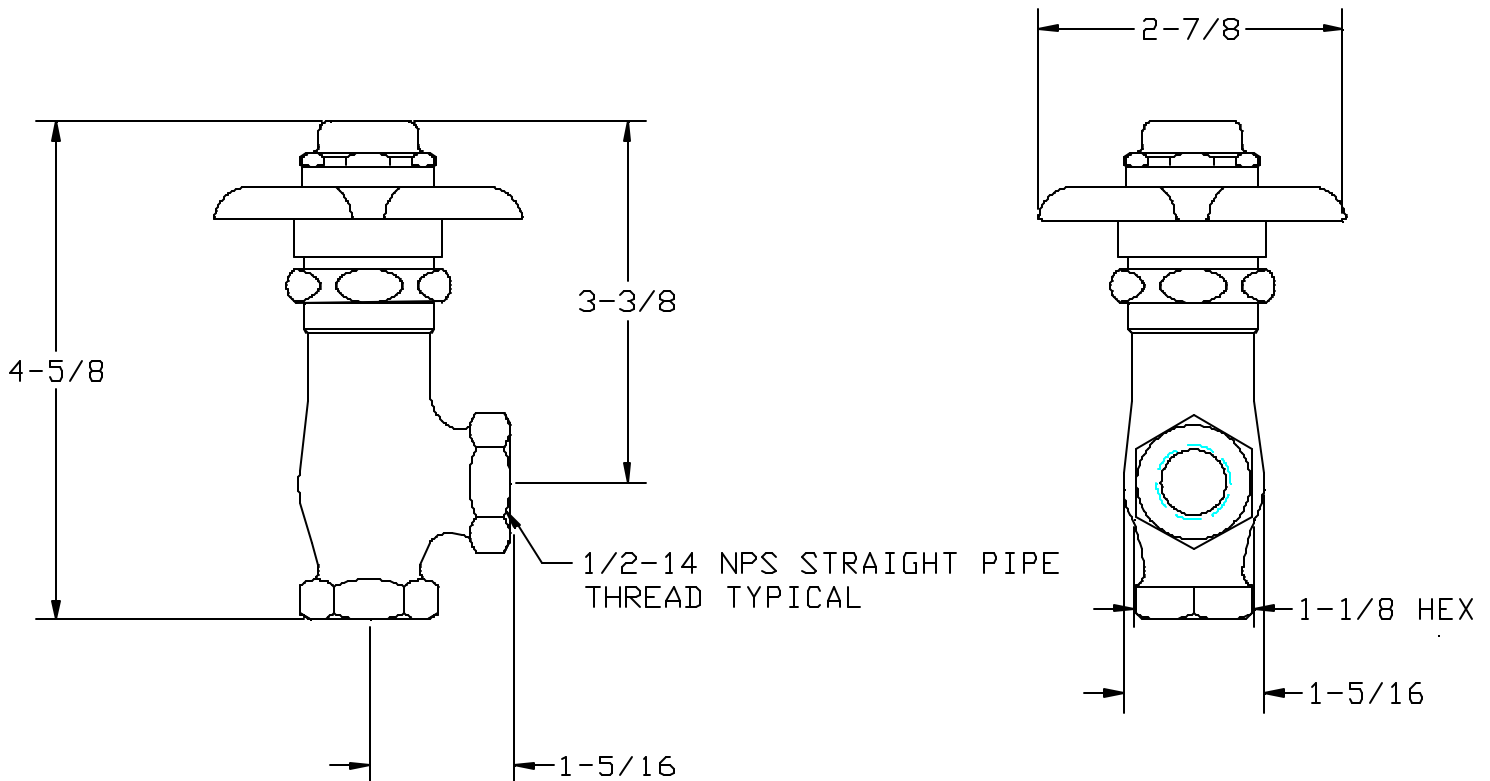
MODEL NO. 0333-1/2
SELF CLOSING
ANGLE STOP

The self closing angle stop has a cast brass body with a replaceable seat. The faucet has a cam operated self closing stem that is lifted off the seat when the handle is rotated. The replaceable seat, stem, centerpiece, and four arm handle are all brass. The return spring is stainless steel. The packing is a reinforced nitrile rubber compound. The cam action roller bearings are brass. The angle stop has a polished chrome plated finish.

ASME A112.18.1M



Installation Drawing



Central Brass

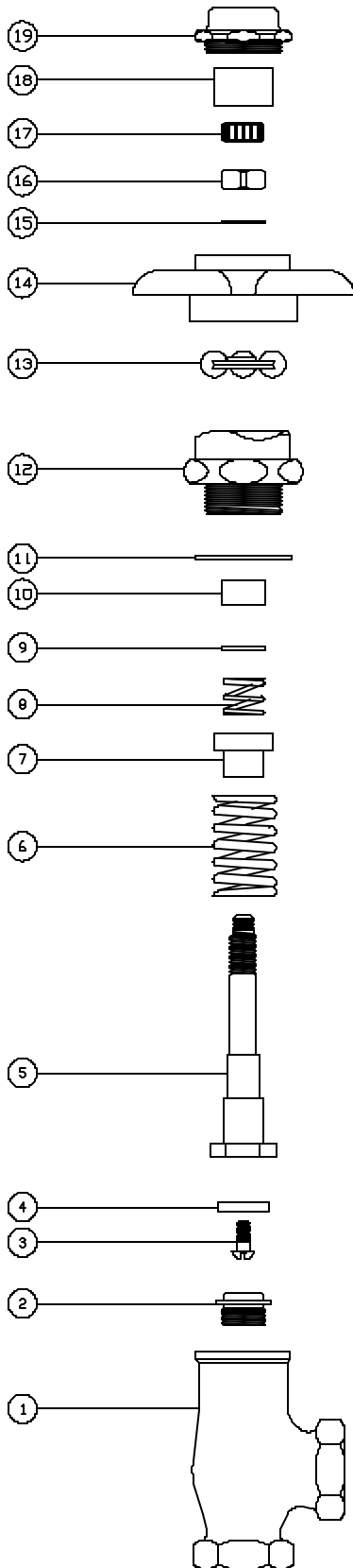
MANUFACTURING COMPANY

2950 East 55th St. Cleveland, Ohio 44127

Phone: (216) 883-0220 Fax: (216) 883-0875

www.CentralBrass.com

MODEL NO. 0333-1/2
SELF CLOSING
ANGLE STOP



Parts Breakdown

#	Part#	Description
1	7062	Brass Body
2	PF-59	Brass Seat
3	104-02	Brass Seat Washer Screw CP
4	904-N	Seat Washer
5	PF-7101-AF	Brass Stem
6	1008-B	Stainless Steel Spring
7	PF-70-F	Brass Gland
8	70-D	Stainless Steel Spring
9	PF-33-A	Brass Washer
10	849-GN	Packing
11	433-AN	Nylon Gasket
12	7106-F	Brass Centerpiece
13	71	Brass Bearings
14	PF-6928-P	Brass Handle
15	33-A	Brass Washer
16	68-HX	Brass Nut
17	PF-67-AC	Celcon Samson Nut
18	69-C	Celcon Sleeve
19	PF-7125	Brass Handle Cap
20	103-HSSS	Set Screw (for vandal-resistant handle)