

# Central Brass

C O M P A N Y

Brecksville, Ohio 44141

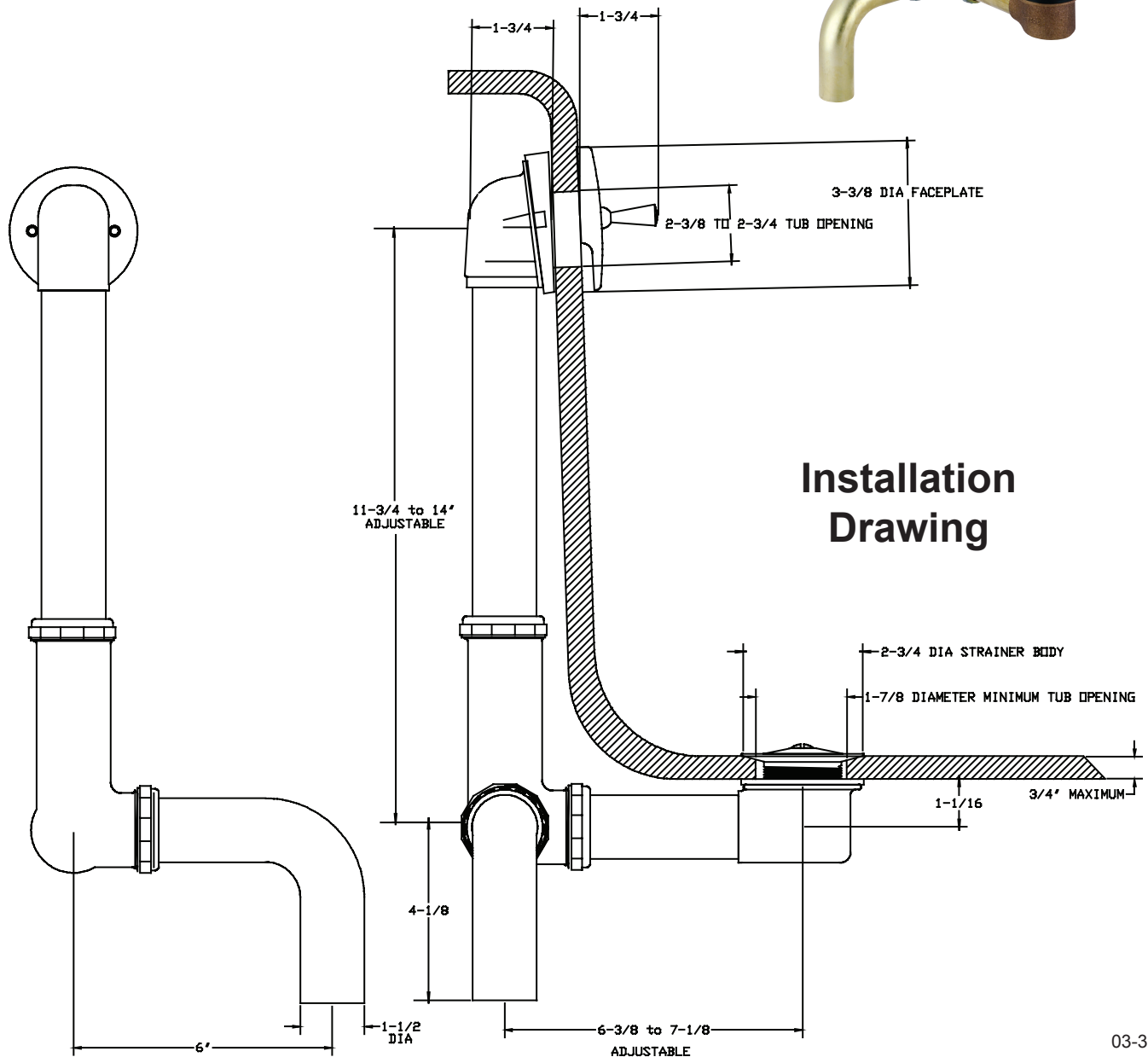
Phone: (216) 883-0220 Fax: (440) 526-5745

www.CentralBrass.com

**MODEL NO. 1675-S**  
**MULTI TUB POP UP**  
**SIDE OUTLET BATH DRAIN**

The pop up bath drain is designed for 14-16 inch multi tub installations. The pop up stopper provides a full open drain and a positive leak tight shut off with an O-Ring seal. The tee and shoe elbow are heavy pattern cast brass. The 1-1/2 inch drain tubes are 20 gage (.031) wall brass. The strainer assembly is all brass with a polished chrome plated finish. The O-Ring is rubber. The faceplate is zinc die cast with a chrome plated finish. The coupling nuts are zinc die cast with a brass plated finish.

ASME A112.18.1M



# Central Brass

C O M P A N Y

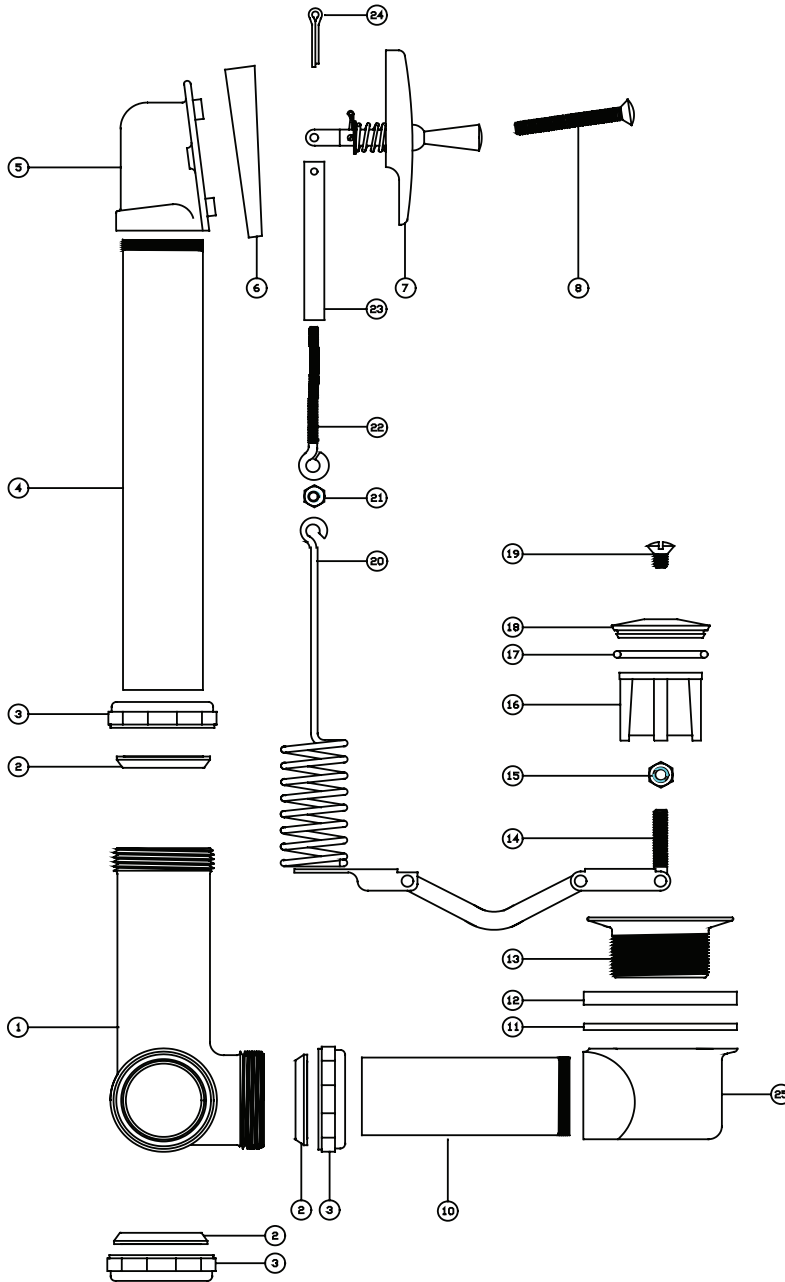
Brecksville, Ohio 44141

Phone: (216) 883-0220 Fax: (440) 526-5745

www.CentralBrass.com

## MODEL NO. 1675-S MULTI TUB POP UP SIDE OUTLET BATH DRAIN

### Parts Breakdown



#	Part #	Description
1	3370	Brass Side Outlet Tee
2	149-RP	Slip Joint Washer
3	3008-BP	Coupling Nut
4	PF-731-D	8-1/2" Brass Standpipe
5	3360-D	Brass Top Ell
6	990-L	Washer
7	SU-83-AZ	Trip Lever
8	127-AP21/4	Brass Phillips Head Screw
9	731-K	Brass Bent Tube
10	PF-731-A	4-1/2" Brass Shoe Tube
11	991	Rubber Washer
12	991-A	Rubber Washer
13	3362	Brass Strainer Body
14	SU-85-APF	Brass Rocker Arm
15	207-B	Brass Hex Nut
16	3359-P	Celcon Guide
17	1038-W	O-Ring
18	PF-3359-S	Brass Plug
19	127-T	Brass Slotted Head Screw
20	85-K	Stainless Steel Spring
21	1081-N	Brass Hex Nut
22	85-U	Brass Eyebolt
23	61-LU	Brass Clevis
24	222-D	Brass Cotte Pin
25	3026-B	Brass Drain Shoe

The parts listed in the parts breakdown above may not be offered separately as replacement parts. Please review the Replacement Parts page for the authorized replacement parts that are available for this item.