

quality . service
innovation . integrity

820 Grinder Pump



Features

This series of submersible pumps is designed for use in residential or commercial wastewater applications and can be used to transfer wastewater or unscreened raw sewage. Each pump features an innovative cutting mechanism allowing it to grind solids into fine particles. The uniform consistency of the discharged material lessens the risk of clogs in the pipe, yielding less down time and fewer service calls. These durable cast iron pumps include a powder coated epoxy finish to prevent corrosion, and are designed to provide great heat dissipation from the motor. As with every Zoeller pump, each one is 100% factory tested to ensure quality and reliability for years of trouble free performance!

Specifications

Motor Characteristics

Motor	2 HP
Voltage	200 - 230 Volts
Phase	1 Ph
Hertz	60 Hz
RPM	3450 RPM
Insulation	Class B
Amps	13.7 - 15.5 Amps

Pump Characteristics

Operation	Automatic and nonautomatic
Discharge Size	1-1/4" NPT vertical
Cord Length	20' (6 m) standard
Cord Type	SO jacketed, multi-wire neoprene
Max Head	107' (32.6 m)
Max Flow Rate	46 GPM (174 LPM)
Max Operating Temp	130° F (54° C)
Cooling	Oil filled
Motor Protection	Thermal overload

Materials Characteristics

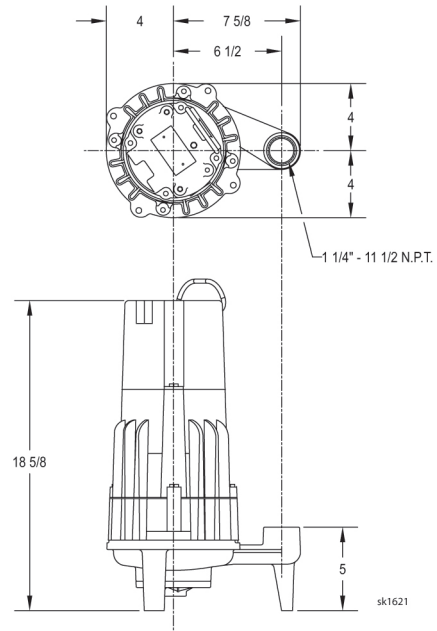
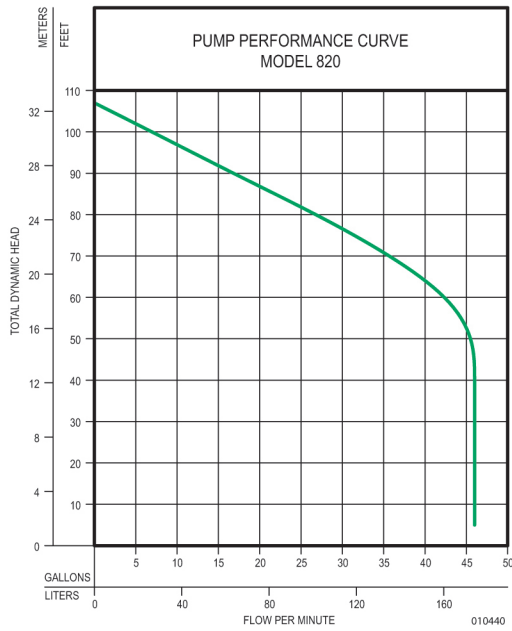
Upper Bearing	Ball bearing
Lower Bearing	Ball bearing
Mechanical Seals	Carbon and ceramic
Impeller Type	Vortex
Impeller	Bronze



PUMP COMPANY

Zoeller Family of Water Solutions™

820 Grinder Pump



Model

Model Number	Mode	Volts	Phase	Amps	HP	Hz
WD820	Auto	230	1	13.7	2	60
E820	Non	230	1	13.7	2	60
WH820	Auto	200	1	15.5	2	60
I820	Non	200	1	15.5	2	60

Your Peace of Mind is Our Top Priority®
3649 Cane Run Rd | Louisville, KY 40211 USA

+1 502-778-2731 | 1-800-928-7867 | Fax: +1 502-774-3624
www.zoeller.com