

NIBCO® Press System® Lead-Free* Brass Ball Valves

Features: press ends leak detection • two-piece body • PTFE seats • full port • blowout-proof stem

Approvals: IAPMO/ANSI Z1157 (IGC-157) • NSF/ANSI-61 & 372 • MSS SP-145 • conform to ASME B16.51†

Size Range: 1/2" - 2"

Pressure rating: 200 PSI non-shock cold working pressure

Maximum pressure / temperature: 200 PSI at 200° F

Lead-Free* markings:

White handle and blue hang tag

Applications: drinking water • domestic hot & cold water • HVAC (condensors, chilled water, hot water heating) • isolation & throttling (half-open to full-open only) • connect to rigid copper tubing manufactured per ASTM B88, condition H (hard drawn)

Reference Press System catalog for updated Approved Tool and Jaw Compatibility Matrix list.

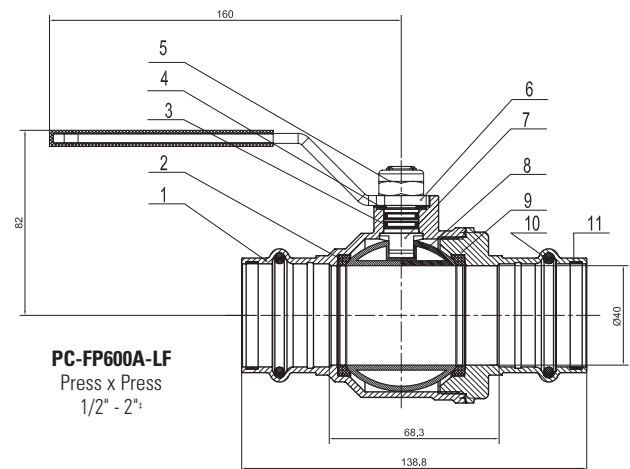
**Not compatible with annealed (dead soft) copper tubing.
Not intended for gas use.**



PC-FP600A-LF

Press x Press
1/2" - 2"

(Patent Pending sizes 1-1/4" - 2")



MATERIAL LIST

PART	SPECIFICATION
1. Body	Forged DZR Copper Alloy - C46500
2. Seat Seal	PTFE
3. O-ring	EPDM - ASTM D2000
4. Washer	PTFE
5. Lock Nut	Stainless Steel + Nylon
6. Handle	Steel, Plated
7. Stem	Brass
8. Ball	Chrome Plated Brass - C46500 (1/2"-1") Stainless Steel 316 (1 1/4"-2")
9. End Cap	Forged DZR Copper Alloy - C46500
10. O-ring	EPDM - ASTM D2000
11. Metal Ring	Stainless Steel (1-1/4"-2")†

Options:

- Extended lever
- EPDM Seal for Press Ends



Handle Markings

DIMENSIONS—WEIGHTS—QUANTITIES

SIZE	A		B		C		D		E		Weight		
	In.	mm.	In.	mm.	In.	mm.	In.	mm.	In.	mm.	Lbs.	Kg.	
1/2	15	2.874	73	3.661	93	1.378	35	0.591	15	1.299	33	0.377	0.171
3/4	20	3.445	87.5	4.173	106	2.087	53	0.787	20	1.634	41.5	0.732	0.332
1	25	3.642	92.5	4.173	106	2.244	57	0.984	25	1.831	46.5	1.003	0.455
1-1/4†	32	4.448	113	4.606	117	2.500	63.5	1.386	35.20	2.21	56	1.7	0.772
1-1/2†	40	5.315	135	6.259	159	3.012	76.5	1.636	41.56	2.54	64.5	2.4	1.076
2"	50	6.535	166	6.259	159	3.228	82	2.137	54.28	3.23	82	4	1.802

IAPMO/ANSI Z1157: in addition to meeting IGC-157 test requirements, the IAPMO/ANSI Z1157 also requires Press ends to be fully tested to IAPMO PS-117 performance requirements which includes the following additional tests:

- | | |
|---|--|
| 1. Unrestrained Hydrostatic Pressure Test at 20°C (68°F) | 6. Hydraulic Shock (Water Hammer) Test |
| 2. Unrestrained Hydrostatic Pressure Test at 93°C (200°F) | 7. Vibration Test |
| 3. Static Torsion Test for Press Connections | 8. Thermal Cycling Test |
| 4. Bending Test | 9. Alternate Thermal Cycling Test |
| 5. Vacuum Test | 10. Dynamic Torsion Test for Press Connections |

*Weighted average lead content ≤ 0.25%
† Tested to the performance criteria of ASME B16.51

‡ Patent Pending