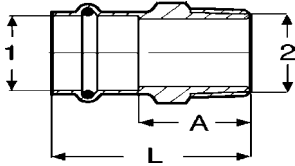


Dimensional Documentation

viega

ProPress®



Bronze Adapter P x MNPT Model 2911ZL

Stock Code	Size		A (in)	L (in)
	1	2		
79210	1/2"	3/8" NPT	0.768	1.594
79215	1/2"	1/2" NPT	1.024	1.929
79220	1/2"	3/4" NPT	1.004	1.831
79225	3/4"	1/2" NPT	1.024	1.929
79230	3/4"	3/4" NPT	1.024	1.929
79235	3/4"	1" NPT	1.181	2.087
79240	1"	3/4" NPT	1.181	2.087
79245	1"	1" NPT	1.260	2.165
79250	1"	1-1/4" NPT	1.535	2.441
79255	1-1/4"	1" NPT	1.220	2.244
79260	1-1/4"	1-1/4" NPT	1.339	2.362
79265	1-1/4"	1-1/2" NPT	1.476	2.500
79270	1-1/2"	1-1/4" NPT	1.339	2.756
79275	1-1/2"	1-1/2" NPT	1.339	2.756
79280	1-1/2"	2" NPT	1.654	3.071
79285	2"	1-1/2" NPT	1.535	3.110
79290	2"	2" NPT	1.496	3.071

Bronze Adapter P x MNPT Model 2911

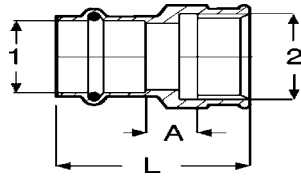
Stock Code	Size		A (in)	L (in)
	1	2		
77812	1/2"	3/8" NPT	0.96	1.713
77817	1/2"	1/2" NPT	1.12	1.870
77822	1/2"	3/4" NPT	1.22	1.969
77827	3/4"	1/2" NPT	1.18	2.087
77832	3/4"	3/4" NPT	1.18	2.087
22348	3/4"	1" NPT	1.42	2.323
77837	1"	3/4" NPT	1.32	2.224
77842	1"	1" NPT	1.46	2.362
77847	1"	1-1/4" NPT	1.73	2.638
77852	1-1/4"	1" NPT	1.42	2.441
77857	1-1/4"	1-1/4" NPT	1.54	2.559
77862	1-1/4"	1-1/2" NPT	1.65	2.677
77867	1-1/2"	1-1/4" NPT	1.54	2.953
77872	1-1/2"	1-1/2" NPT	1.54	2.953
22343	1-1/2"	2" NPT	1.83	3.248
22338	2"	1-1/2" NPT	1.67	3.248
77877	2"	2" NPT	1.67	3.248

VIEGA • The global leader in plumbing, heating and pipe joining systems

301 N. Main, 9th Floor • Wichita, KS 67202 • Ph: 800-976-9819 • Fax: 316-425-7618 • E-Mail: insidesales@viega.com • www.viega.com

Dimensional Documentation

viega



Adapter P x F NPT Model 2912ZL

Stock Code	Size	A (in)	L (in)
	1 2		
79295	1/2" x 3/8" NPT	0.185	1.417
79300	1/2" x 1/2" NPT	0.252	1.614
79305	1/2" x 3/4" NPT	0.272	1.654
79315	3/4" x 3/4" NPT	0.350	1.811
79310	3/4" x 1/2" NPT	0.331	1.772
79320	1" x 1/2" NPT	0.331	1.772
79325	1" x 3/4" NPT	0.390	1.850
79330	1" x 1" NPT	0.441	2.008
79335	1" x 1-1/4" NPT	0.500	2.087
79345	1-1/4" x 1" NPT	0.244	1.929
79355	1-1/4" x 1-1/2"	0.421	2.126
79350	1 1/4" x 1-1/4" NPT	0.343	2.047
79340	1-1/4" x 1/2" NPT	0.370	1.929
79360	1-1/2" x 1-1/4" NPT	0.264	2.362
79365	1 1/2" x 1-1/2" NPT	0.343	2.441
79370	2" x 2" NPT	0.406	2.677

Bronze Adapter P x F NPT Model 2912

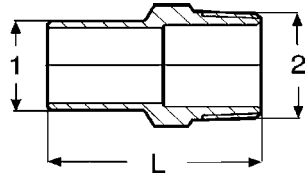
Stock Code	Size	A (in)	L (in)
	1 2		
77887	1/2" x 3/8" NPT	0.224	1.378
77892	1/2" x 1/2" NPT	0.291	1.575
77897	1/2" x 3/4" NPT	0.394	1.693
77902	3/4" x 1/2" NPT	0.331	1.772
77907	3/4" x 3/4" NPT	0.394	1.850
14548	1" x 1/2" NPT	0.252	1.693
77912	1" x 3/4" NPT	0.394	1.850
77917	1" x 1" NPT	0.480	2.047
77922	1" x 1-1/4" NPT	0.539	2.126
22208	1-1/4" x 1/2" NPT	0.374	1.929
77927	1-1/4" x 1" NPT	0.205	1.890
77932	1-1/4" x 1-1/4" NPT	0.382	2.087
77937	1-1/4" x 1-1/2" NPT	0.461	2.165
77942	1-1/2" x 1-1/4" NPT	0.382	2.480
77947	1-1/2" x 1-1/2" NPT	0.382	2.480
77952	2" x 2" NPT	0.445	2.717

VIEGA • The global leader in plumbing, heating and pipe joining systems

301 N. Main, 9th Floor • Wichita, KS 67202 • Ph: 800-976-9819 • Fax: 316-425-7618 • E-Mail: insidesales@viega.com • www.viega.com

Dimensional Documentation

viega



Bronze Adapter FTG x M NPT Model 2911.1ZL

Stock Code	Size		L (in)
	1	2	
79375	1/2"	3/8" NPT	1.752
79380	1/2"	1/2" NPT	1.949
79385	1/2"	3/4" NPT	2.047
79390	3/4"	1/2" NPT	1.929
79395	3/4"	3/4" NPT	2.047
79400	1"	3/4" NPT	2.047
79405	1"	1" NPT	2.224
79410	1-1/4"	1-1/4" NPT	2.539
79415	1-1/2"	1-1/2" NPT	2.894
79420	2"	2" NPT	3.189

Bronze Adapter FTG x M NPT Model 2911.1

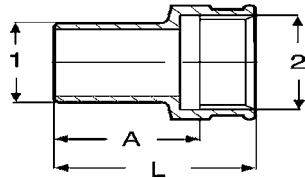
Stock Code	Size		L (in)
	1	2	
77957	1/2"	3/8" NPT	1.732
77962	1/2"	1/2" NPT	1.969
77967	1/2"	3/4" NPT	2.047
77972	3/4"	1/2" NPT	2.028
77977	3/4"	3/4" NPT	2.146
14553	1"	3/4" NPT	2.146
77982	1"	1" NPT	2.362
77987	1-1/4"	1-1/4" NPT	2.657
77992	1-1/2"	1-1/2" NPT	2.051
77997	2"	2" NPT	3.543

VIEGA • The global leader in plumbing, heating and pipe joining systems

301 N. Main, 9th Floor • Wichita, KS 67202 • Ph: 800-976-9819 • Fax: 316-425-7618 • E-Mail: insidesales@viega.com • www.viega.com

Dimensional Documentation

viega



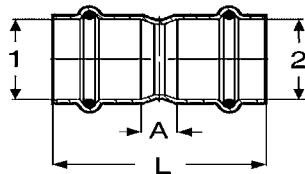
Adapter FTG x F NPT Model 2912.1ZL

Stock Code	Size	A (in)	L (in)
	1 2		
79425	1/2" x 3/8" NPT	1.130	1.535
79430	1/2" x 1/2" NPT	1.217	1.752
79435	1/2" x 3/4" NPT	1.276	1.831
79440	3/4" x 1/2" NPT	1.256	1.791
79445	3/4" x 3/4" NPT	1.276	1.831
79455	1" x 1/2" NPT	1.453	1.988
79450	1" x 1" NPT	1.327	1.988
79460	1-1/4" x 1/2" NPT	1.650	2.185
79465	1-1/4" x 1-1/4" NPT	1.504	2.185
79470	1-1/2" x 1-1/2" NPT	1.878	2.559
79475	2" x 2" NPT	2.118	2.815

Bronze Adapter FTG x FNPT Model 2912.1

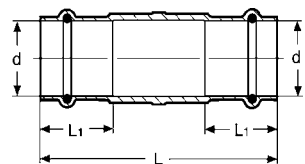
Stock Code	Size	A (in)	L (in)
	1 2		
78002	1/2" x 3/8" NPT	1.031	1.437
78007	1/2" x 1/2" NPT	1.118	1.654
78012	1/2" x 3/4" NPT	1.181	1.732
78017	3/4" x 1/2" NPT	1.217	1.752
78022	3/4" x 3/4" NPT	1.256	1.811
22218	1" x 1/2" NPT	1.433	1.969
22213	1-1/4" x 1/2" NPT	1.630	2.165
78027	1" x 1" NPT	1.307	1.969
78032	1-1/4" x 1-1/4" NPT	1.484	2.165
78037	1-1/2" x 1-1/2" NPT	1.878	2.559
78042	2" x 2" NPT	2.335	3.031

Copper Coupling P x P with Stop Model 2915



Stock Code	Size	A (in)	L (in)
	1		
78047	1/2"	0.118	1.614
78052	3/4"	0.197	2.008
78057	1"	0.157	1.969
78062	1-1/4"	0.138	2.205
78067	1-1/2"	0.138	2.992
78072	2"	0.138	3.307

Copper Coupling P x P No Stop Model 2915.3



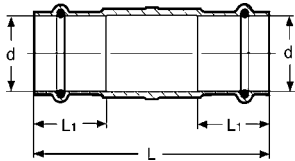
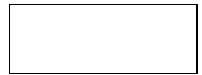
Stock Code	Size	L (in)
	1	
78172	1/2"	1.732
78177	3/4"	2.205
78182	1"	2.205
78187	1-1/4"	2.441
78192	1-1/2"	3.307
78197	2"	3.622

VIEGA • The global leader in plumbing, heating and pipe joining systems

301 N. Main, 9th Floor • Wichita, KS 67202 • Ph: 800-976-9819 • Fax: 316-425-7618 • E-Mail: insidesales@viega.com • www.viega.com

Dimensional Documentation

viega

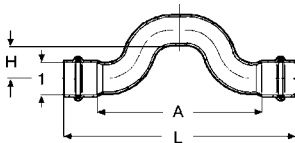


Copper Coupling P x P Extended No Stop Model 2915.5

Stock Code	Size	L (in)
	1	
79005	1/2"	2.953
79010	3/4"	3.346
79015	1"	3.740
79020	1-1/4"	4.134
79025	1-1/2"	4.724
79030	2"	5.315

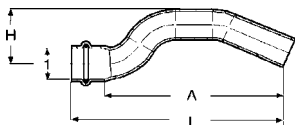
Bronze Coupling P x P Extended No Stop Model 2915.6

Stock Code	Size	L (in)
	1	
78213	1/2"	2.953
78218	3/4"	3.346
78223	1"	3.740
78228	1-1/4"	4.134
78233	1-1/2"	4.724
78238	2"	5.315



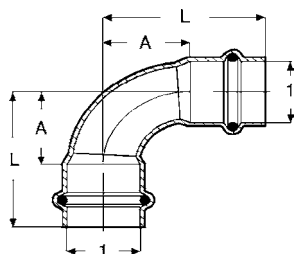
Copper Cross-Over P x P Model 2928

Stock Code	Size	A (in)	L (in)	H (in)
	1			
77742	1/2"	3.622	5.118	0.772
77747	3/4"	4.488	6.339	0.902



Copper Cross-Over FTG x P Close Rough Model 2927

Stock Code	Size	A (in)	L (in)	H (in)
	1			
78137	1/2"	3.835	4.583	1.098
78142	3/4"	4.638	5.543	1.539



Copper Elbow 90° P x P Close Rough Model 2916

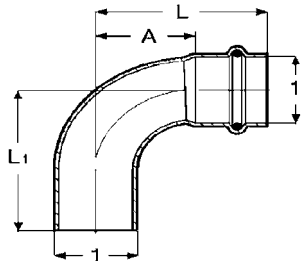
Stock Code	Size	A (in)	L (in)
	1		
77317	1/2"	0.748	1.496
77322	3/4"	1.039	1.945
77327	1"	1.323	2.228
77332	1-1/4"	1.654	2.677
77337	1-1/2"	1.984	3.402
77342	2"	2.551	4.126

VIEGA • The global leader in plumbing, heating and pipe joining systems

301 N. Main, 9th Floor • Wichita, KS 67202 • Ph: 800-976-9819 • Fax: 316-425-7618 • E-Mail: insidesales@viega.com • www.viega.com

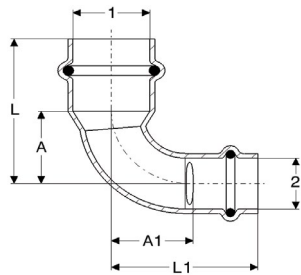
Dimensional Documentation

viega



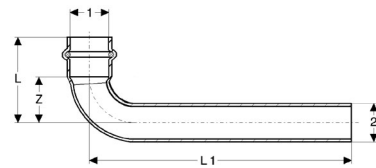
Copper Elbow 90° FTG x P Close Rough Model 2916.1

Stock Code	Size	A (in)	L (in)	L1 (in)
	1			
77347	1/2"	0.748	1.496	1.535
77352	3/4"	1.039	1.945	1.984
77357	1"	1.323	2.228	2.268
77362	1-1/4"	1.654	2.677	2.756
77367	1-1/2"	1.984	3.402	3.480
77372	2"	2.551	4.126	4.205



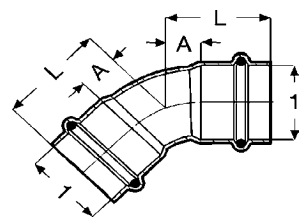
Copper Reducing Elbow 90° P x P Model 2916.3

Stock Code	Size	A (in)	A1 (in)	L (in)	L1 (in)
	1 2				
77325	3/4" x 1/2"	0.906	0.945	1.811	1.693
77330	1" x 3/4"	1.205	1.303	2.110	2.209



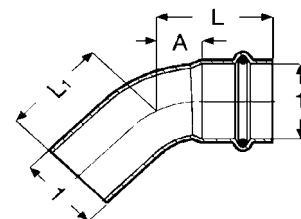
Copper Elbow 90° FTG x C Model 2947

Stock Code	Size	Z (in)	L (in)	L1 (in)
	1 2			
77353	3/4" x 3/4"	1.039	1.945	6.000



Copper Elbow 45° P x P Model 2926

Stock Code	Size	A (in)	L (in)
	1		
77607	1/2"	0.295	1.043
77612	3/4"	0.433	1.339
77617	1"	0.551	1.457
77622	1-1/4"	0.685	1.709
77627	1-1/2"	0.823	2.240
77632	2"	1.059	2.634



Copper Elbow 45° FTG x P Model 2926.1

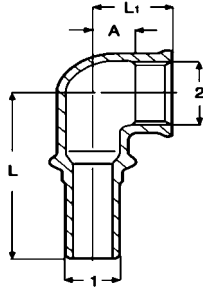
Stock Code	Size	A (in)	L (in)	L1 (in)
	1			
77637	1/2"	0.311	1.059	1.098
77642	3/4"	0.433	1.339	1.374
77647	1"	0.551	1.457	1.492
77652	1-1/4"	0.685	1.709	1.787
77657	1-1/2"	0.823	2.240	2.319
77662	2"	1.059	2.634	2.709

VIEGA • The global leader in plumbing, heating and pipe joining systems

301 N. Main, 9th Floor • Wichita, KS 67202 • Ph: 800-976-9819 • Fax: 316-425-7618 • E-Mail: insidesales@viega.com • www.viega.com

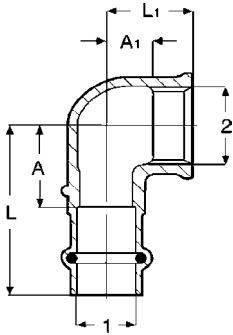
Dimensional Documentation

viega



Bronze Elbow 90° FTG x FNPT Model 2914.3

Stock Code	Size		A (in)	L (in)	L1 (in)
	1	2			
77577	1/2" x 1/2" NPT		0.331	2.008	0.866



Bronze Elbow 90° P X F NPT Model 2914.2ZL

Stock Code	Size		A (in)	A1 (in)	L (in)	L1 (in)
	1	2				
79520	1/2" x 3/8" NPT		0.945	0.421	1.772	0.827
79525	1/2" x 1/2" NPT		0.945	0.567	1.772	1.102
79530	1/2" x 3/4" NPT		1.063	0.508	1.890	1.063
79535	3/4" x 1/2" NPT		1.063	0.646	1.969	1.181
79540	3/4" x 3/4" NPT		1.063	0.567	1.969	1.122
79545	1" x 1/2" NPT		1.063	0.724	1.969	1.260
79550	1" x 1" NPT		1.339	0.756	2.244	1.417
79560	1-1/4" x 1-1/4" NPT		1.535	0.894	2.559	1.575
79565	1-1/2" x 1-1/2" NPT		1.693	1.051	3.110	1.732
79570	2" x 2" NPT		2.165	1.350	3.740	2.047

Bronze Elbow 90° P x FNPT Model 2914.2

Stock Code	Size		A (in)	A1 (in)	L (in)	L1 (in)
	1	2				
22193	1/2" x 3/8" NPT		0.945	0.295	1.693	0.728
77532	1/2" x 1/2" NPT		0.984	0.331	1.732	0.866
77537	1/2" x 3/4" NPT		1.142	0.409	1.890	0.965
77542	3/4" x 3/4" NPT		1.150	0.488	2.055	1.043
77547	3/4" x 1/2" NPT		1.142	0.472	2.047	1.004
22203	1" x 1/2" NPT		1.299	0.709	2.205	1.260
77552	1" x 1" NPT		1.417	0.618	2.323	1.280
22198	1-1/4" x 1/2" NPT		1.260	0.728	2.283	1.260
77557	1-1/4" x 1-1/4" NPT		1.575	0.841	2.598	1.516
77562	1-1/2" x 1-1/2" NPT		1.614	1.012	3.031	1.693
77567	2" x 2" NPT		2.244	1.469	3.819	2.165

VIEGA • The global leader in plumbing, heating and pipe joining systems

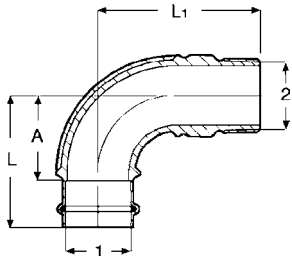
301 N. Main, 9th Floor • Wichita, KS 67202 • Ph: 800-976-9819 • Fax: 316-425-7618 • E-Mail: insidesales@viega.com • www.viega.com

Dimensional Documentation

viega

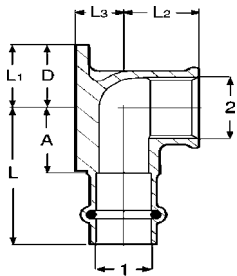


Bronze Elbow 90° P x MNPT Model 2914



Stock Code	Size		A (in)	A1 (in)	L1 (in)
	1	2			
77492	1/2"	1/2" NPT	0.945	1.693	1.890
77497	1/2"	3/4" NPT	0.945	1.693	2.047
77502	3/4"	1/2" NPT	0.984	1.890	1.870
77507	3/4"	3/4" NPT	1.102	2.008	2.323
77512	1"	1" NPT	1.382	2.287	2.835
77517	1-1/4"	1-1/4" NPT	1.870	2.894	3.465
77522	1-1/2"	1-1/2" NPT	2.205	3.622	3.839
77527	2"	2" NPT	2.756	4.331	4.724

Bronze Elbow Drop 90° P x F NPT with Wall Plate Model 2925.5ZL

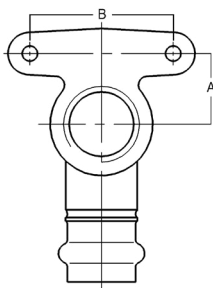


Stock Code	Size		L (in)	L1 (in)	L2 (in)	L3 (in)	A (in)
	1	2					
79185	1/2"	3/8"	1.768	0.736	0.827	0.669	0.945
79190	1/2"	1/2"	1.772	0.736	1.102	0.669	0.945
79195	3/4"	3/4"	1.969	0.835	1.122	0.835	1.063

Bronze Elbow Drop 90° P x FNPT with Wall Plate Model 2925.5

Stock Code	Size		L (in)	L1 (in)	L2 (in)	L3 (in)	A (in)
	1	2					
22223	1/2"	3/8" NPT	1.770	0.830	0.510	0.730	1.020
77697	1/2"	1/2" NPT	1.732	0.835	0.866	0.512	0.984
77702	3/4"	3/4" NPT	2.047	1.181	1.122	0.835	1.142
72481	1"	1" NPT	2.360	0.980	0.870	1.260	1.460

Bronze Hi Ear 90° P x FNPT Model 2925.2



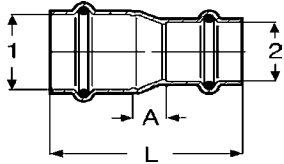
Stock Code	Size		A (in)	B (in)
	1			
77572	1/2"		.890	1.730

VIEGA • The global leader in plumbing, heating and pipe joining systems

301 N. Main, 9th Floor • Wichita, KS 67202 • Ph: 800-976-9819 • Fax: 316-425-7618 • E-Mail: insidesales@viega.com • www.viega.com

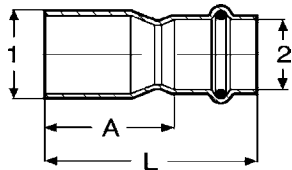
Dimensional Documentation

viega



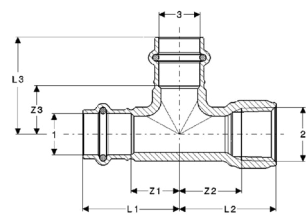
Copper Reducer P x P Model 2915.2

Stock Code	Size		A (in)	L (in)
	1	2		
78147	3/4"	1 1/2"	0.445	2.071
15603	1"	1 1/2"	0.736	2.362
78152	1"	3/4"	0.504	2.287
15593	1-1/4"	3/4"	0.728	2.638
78157	1-1/4"	1"	0.614	2.524
18473	1-1/2"	3/4"	0.994	3.327
15588	1-1/2"	1"	0.768	3.071
78162	1-1/2"	1-1/4"	0.528	2.959
18468	2"	3/4"	1.524	4.016
15608	2"	1"	1.319	3.780
22328	2"	1-1/4"	0.827	3.425
78167	2"	1-1/2"	0.846	3.827



Copper Reducer FTG x P Model 2915.1

Stock Code	Size		A (in)	L (in)
	1	2		
78077	3/4"	1 1/2"	1.417	2.165
78082	1"	1 1/2"	1.693	2.441
78087	1"	3/4"	1.417	2.323
22333	1-1/4"	1 1/2"	2.185	2.933
78092	1-1/4"	3/4"	1.850	2.756
78097	1-1/4"	1"	1.575	2.480
15573	1-1/2"	1 1/2"	2.008	2.756
14543	1-1/2"	3/4"	2.559	3.465
78102	1-1/2"	1"	2.283	3.189
78107	1-1/2"	1-1/4"	2.047	3.071
15578	2"	1 1/2"	2.913	3.661
15583	2"	3/4"	2.874	3.780
78112	2"	1"	3.031	3.937
78117	2"	1-1/4"	2.795	3.819
78122	2"	1-1/2"	2.638	4.055



Bronze Tee P x FNPT x P Model 2917.4

Stock Code	Size			Z1 (in)	Z2 (in)	Z3L (in)	L1 (in)	L2 (in)	L3 (in)
	1	2	3						
77583	1/2"	1 1/2" NPT	1/2"	0.75	0.96	0.75	1.50	1.50	1.50
77593	3/4"	1 1/2" NPT	3/4"	0.94	0.96	0.94	1.85	1.50	1.85
77588	3/4"	3/4" NPT	3/4"	1.94	1.14	0.94	1.85	1.69	1.85
77598	1"	3/4" NPT	1"	1.14	1.08	1.14	2.05	1.77	2.05
77603	1-1/4"	3/4" NPT	1-1/4"	1.26	1.20	1.26	2.28	1.89	2.28
77608	1-1/2"	3/4" NPT	1-1/2"	1.34	1.36	1.34	2.76	2.05	2.76
77613	2"	3/4" NPT	2"	1.69	1.56	1.69	3.27	2.24	3.27

VIEGA • The global leader in plumbing, heating and pipe joining systems

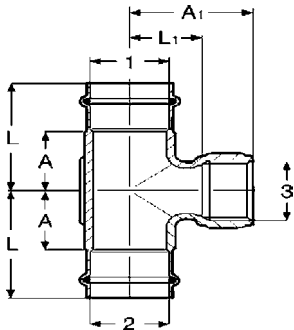
301 N. Main, 9th Floor • Wichita, KS 67202 • Ph: 800-976-9819 • Fax: 316-425-7618 • E-Mail: insidesales@viega.com • www.viega.com

Dimensional Documentation

viega



Bronze Tee P x P x F NPT Model 2917.2ZL

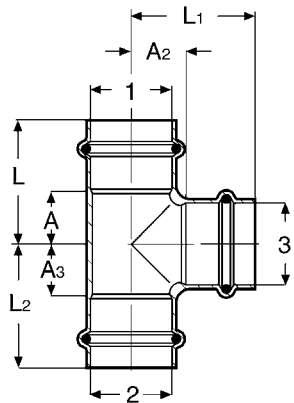


Stock Code	Size			A (in)	A1 (in)	L (in)	L1 (in)
	1	2	3				
79580	1/2" x 1/2" x 1/2"			0.945	0.803	1.693	1.339
79595	3/4" x 3/4" x 1/4"			0.768	0.929	1.673	1.378
79590	3/4" x 3/4" x 1/2"			1.004	1.138	1.909	1.673
79595	3/4" x 3/4" x 3/4"			0.984	0.850	1.890	1.417
79760	1" x 1" x 1/2"			1.004	1.236	1.909	1.772
79765	1" x 1" x 3/4"			1.161	1.413	2.067	1.969
79770	1-1/4" x 1-1/4" x 1/2"			0.886	1.394	1.909	1.929
79775	1-1/4" x 1-1/4" x 3/4"			0.945	1.531	1.969	2.087
79780	1-1/2" x 1-1/2" x 1/2"			0.748	1.433	2.165	1.969
79785	1-1/2" x 1-1/2" x 3/4"			0.878	1.531	2.303	2.087
79795	2" x 2" x 3/4"			1.083	1.543	2.657	2.362

Bronze Tee P x P x F NPT Model 2917.2

Stock Code	Size			A (in)	A1 (in)	L (in)	L1 (in)
	1	2	3				
77582	1/2" x 1/2" x 1/2" NPT			0.945	1.339	1.693	0.803
14563	3/4" x 3/4" x 1/4" NPT			0.768	1.378	1.673	0.928
77587	3/4" x 3/4" x 1/2" NPT			1.004	1.673	1.909	1.138
77589	3/4" x 3/4" x 3/4" NPT			1.000	0.875	1.875	1.375
77592	1" x 1" x 1/2" NPT			1.004	1.772	1.909	1.236
15623	1" x 1" x 3/4" NPT			1.161	1.969	2.067	1.343
77597	1-1/4" x 1-1/4" x 1/2" NPT			0.886	1.929	1.909	1.323
15618	1-1/4" x 1-1/4" x 3/4" NPT			0.945	1.929	1.969	1.303
78342	1-1/2" x 1-1/2" x 1/2" NPT			0.748	1.969	2.165	1.433
15613	1-1/2" x 1-1/2" x 3/4" NPT			0.886	2.087	2.303	1.461
77602	2" x 2" x 1/2" NPT			0.984	2.165	2.559	1.630
14558	2" x 2" x 3/4" NPT			1.083	2.362	2.657	1.736

Copper Tee P x P x P Model 2918



Stock Code	Size			A (in)	A2 (in)	A3 (in)	L (in)	L1 (in)	L2 (in)
	1	2	3						
77377	1/2"			0.738	0.498	0.738	1.496	1.443	1.496
77382	1-1/2" x 1-1/2" x 3/4"			0.906	0.591	0.906	1.654	1.496	1.654
15493	1-1/2" x 1-1/2" x 1"			1.102	0.551	1.102	1.850	1.457	1.850
77387	3/4"			0.837	0.591	0.837	1.752	1.496	1.752
77392	3/4" x 1/2" x 1/2"			0.687	0.630	0.984	1.594	1.378	1.732
77397	3/4" x 1/2" x 3/4"			0.844	0.591	1.142	2.752	1.496	1.890
77402	3/4" x 3/4" x 1/2"			0.687	0.630	0.687	1.594	1.378	1.594
77407	3/4" x 3/4" x 1"			0.965	0.630	0.965	1.870	1.535	1.870
77412	1"			0.955	0.787	0.955	1.870	1.693	1.870
22263	1" x 1/2" x 3/4"			0.846	0.748	1.240	1.752	1.654	1.988
94767	1" x 1/2" x 1"			0.978	0.787	1.516	1.870	1.693	2.264
77417	1" x 3/4" x 1/2"			0.703	0.787	0.886	1.594	1.535	1.791
77422	1" x 3/4" x 3/4"			0.837	0.748	1.043	1.752	1.654	1.949
77427	1" x 3/4" x 1"			0.709	0.787	1.161	1.870	1.693	2.067

Continued on next page

VIEGA • The global leader in plumbing, heating and pipe joining systems

301 N. Main, 9th Floor • Wichita, KS 67202 • Ph: 800-976-9819 • Fax: 316-425-7618 • E-Mail: insidesales@viega.com • www.viega.com

Dimensional Documentation

viega

Copper Tee P x P x P Model 2918 (continued from previous page)									
Stock Code	Size			A (in)	A2 (in)	A3 (in)	L (in)	L1 (in)	L2 (in)
	1	2	3						
77432	1" x 1" x 1/2"			0.689	0.787	0.689	1.594	1.535	1.594
77437	1" x 1" x 3/4"			0.844	0.748	0.844	1.752	1.654	1.752
15488	1" x 1" x 1 1/4"			1.161	0.837	1.161	2.067	1.870	2.067
77442	1 1/4"			1.024	0.866	1.024	2.047	1.890	2.047
22253	1-1/4" x 1/2" x 1-1/4"			1.024	0.866	1.772	2.047	1.890	2.520
22243	1-1/4" x 3/4" x 1/2"			0.650	0.925	1.122	1.673	1.673	2.028
22258	1-1/4" x 3/4" x 3/4"			0.768	0.866	1.299	1.791	1.772	2.205
22268	1-1/4" x 3/4" x 1"			0.886	0.906	1.398	1.929	1.811	2.303
22248	1-1/4" x 3/4" x 1-1/4"			1.024	0.866	1.535	2.047	1.890	2.441
22238	1-1/4" x 1" x 1/2"			0.650	0.925	0.906	1.673	1.673	1.811
94762	1-1/4" x 1" x 3/4"			0.768	0.866	1.142	1.791	1.772	2.047
14568	1-1/4" x 1" x 1"			0.886	0.906	1.280	1.909	1.811	2.185
94757	1-1/4" x 1-1/4" x 1/2"			0.650	0.925	0.650	1.673	1.673	1.673
77452	1-1/4" x 1-1/4" x 3/4"			0.768	0.886	0.768	1.791	1.772	1.791
77447	1-1/4" x 1-1/4" x 1"			0.886	0.906	0.886	1.909	1.811	1.909
77457	1-1/2"			1.142	1.142	1.142	2.559	2.559	2.559
15468	1-1/2" x 1" x 3/4"			0.906	1.299	1.063	2.323	2.205	1.969
15458	1-1/2" x 1" x 1"			0.738	1.063	1.535	2.165	1.969	2.441
15463	1-1/2" x 1" x 1-1/2"			1.132	1.132	1.831	2.559	2.559	2.736
22233	1-1/2" x 1-1/4" x 3/4"			0.669	1.142	1.083	2.087	2.047	2.106
15453	1-1/2" x 1-1/4" x 1"			0.738	1.181	1.289	2.165	2.087	2.323
15483	1-1/2" x 1-1/4" x 1-1/4"			0.886	1.142	1.339	2.283	2.165	2.362
15448	1-1/2" x 1-1/2" x 1/2"			0.463	1.102	0.463	1.890	1.850	1.890
77462	1-1/2" x 1-1/2" x 3/4"			0.669	1.142	0.669	2.087	2.047	2.087
77467	1-1/2" x 1-1/2" x 1"			0.748	1.181	0.748	2.165	2.087	2.165
77472	1-1/2" x 1-1/2" x 1-1/4"			0.886	1.142	0.866	2.283	2.165	2.283
77477	2"			1.378	1.378	1.378	2.953	2.953	2.953
15518	2" x 1-1/4" x 1-1/4"			0.935	1.329	1.841	2.520	2.362	2.874
15498	2" x 1-1/2" x 1"			0.817	1.378	1.447	2.402	2.283	2.874
15513	2" x 1-1/2" x 3/4"			0.709	1.378	1.260	2.283	2.283	2.677
15508	2" x 1-1/2" x 1-1/4"			0.935	1.486	1.545	2.520	2.520	2.972
15503	2" x 1-1/2" x 1-1/2"			1.142	1.378	1.654	2.717	2.795	3.071
22228	2" x 1-1/2" x 2"			1.378	1.378	1.890	2.953	2.953	3.327
15538	2" x 2" x 1/2"			0.541	1.299	0.541	2.126	2.047	2.126
94777	2" x 2" x 3/4"			0.797	1.260	0.797	2.372	2.165	2.372
94772	2" x 2" x 1"			0.915	1.299	0.915	2.490	2.205	2.490
77487	2" x 2" x 1-1/4"			1.043	1.378	1.043	2.618	2.402	2.618
77482	2" x 2" x 1-1/2"			1.142	1.378	1.142	2.717	2.795	2.717

Bronze Tee P x P x P Model 2918.4

Stock Code	Size			A (in)	A2 (in)	A3 (in)	L (in)	L1 (in)	L2 (in)
	1	2	3						
15473	1-1/2" x 1/2" x 1-1/2"			1.240	1.240	1.417	2.657	2.657	2.165
15478	1-1/2" x 3/4" x 3/4"			0.906	1.299	1.229	2.323	2.205	2.205
15533	2" x 1/2" x 2"			1.772	1.772	1.535	3.346	3.346	2.283
15523	2" x 1" x 1"			1.220	1.772	1.732	2.795	2.638	2.638
15528	2" x 1" x 2"			1.772	1.722	2.244	3.346	3.346	3.150

VIEGA • The global leader in plumbing, heating and pipe joining systems

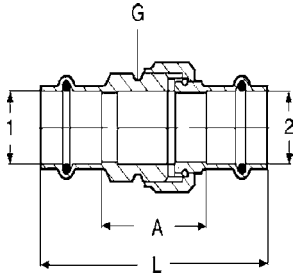
301 N. Main, 9th Floor • Wichita, KS 67202 • Ph: 800-976-9819 • Fax: 316-425-7618 • E-Mail: insidesales@viega.com • www.viega.com

Dimensional Documentation

viega



Bronze Union P x P Model 2960ZL

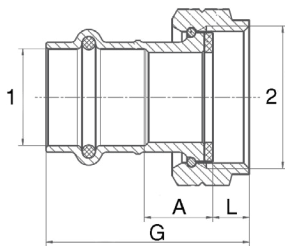


Stock Code	Size	A (in)	L (in)	G (in)
	1 2			
79125	1/2"	1.264	2.917	3/4"
79130	3/4"	1.339	3.150	1"
79135	1"	1.827	3.638	1-1/4"
79140	1-1/4"	1.634	3.681	1-1/2"
79145	1-1/2"	2.126	4.961	2"
79150	2"	2.067	5.217	2-1/2"

Bronze Union P x P Model 2960

Stock Code	Size	A (in)	L (in)	G (in)
	1 2			
77667	1/2"	1.260	2.756	3/4
77672	3/4"	1.335	3.146	1
77677	1"	1.827	3.638	1-1/4
77682	1-1/4"	1.634	3.681	1-1/2
77687	1-1/2"	2.126	4.962	2
77692	2"	2.067	5.217	2-1/2

Bronze Tailpiece Adapter P x F Union Model 2957ZL



Stock Code	Size	A (in)	L (in)	G (in)
	1 2			
79800	1/2" x 1" BSP	0.393	0.354	1.496
79805	3/4" x 1" BSP	0.629	0.334	1.870
79810	1" x 1" BSP	0.807	0.334	2.047
79815	1" x 1-1/4" BSP	0.728	0.413	2.047

Bronze Tailpiece Adapter P x F Union Model 2957

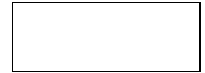
Stock Code	Size	A (in)	L (in)	G (in)
	1 2			
77753	1/2" x 1" BSP	0.393	0.354	1.496
77758	3/4" x 1" BSP	0.629	0.334	1.870
77763	1" x 1" BSP	0.807	0.334	2.047
77764	1" x 1-1/4" BSP	0.728	0.413	2.047

VIEGA • The global leader in plumbing, heating and pipe joining systems

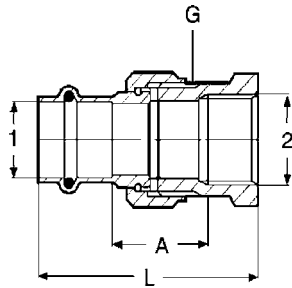
301 N. Main, 9th Floor • Wichita, KS 67202 • Ph: 800-976-9819 • Fax: 316-425-7618 • E-Mail: insidesales@viega.com • www.viega.com

Dimensional Documentation

viega



Bronze Union P x FNPT Model 2962ZL

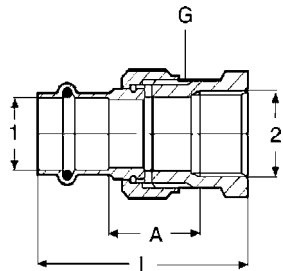


Stock Code	Size		A (in)	L (in)	G (in)
	1	2			
79700	1/2"		0.984	2.346	3/4"
79705	3/4"		0.957	2.417	1"
79710	1"		1.303	2.870	1-1/4"
79715	1-1/4"		1.268	2.972	1-1/2"
79720	1-1/2"		1.760	3.858	2"
79725	2"		1.646	3.917	2-1/2"

Bronze Union P x FNPT Model 2962

Stock Code	Size		A (in)	L (in)	G (in)
	1	2			
77752	1/2" x 1/2" NPT		0.961	2.244	3/4"
77757	3/4" x 3/4" NPT		0.957	2.417	1"
77762	1" x 1" NPT		1.303	2.870	1-1/4"
77767	1-1/4" x 1-1/4" NPT		1.268	2.972	1-1/2"
77772	1-1/2" x 1-1/2" NPT		1.760	3.858	2"
77777	2" x 2" NPT		1.646	3.917	2-1/2"

Di-electric Union P x F NPT Model 2967ZL



Stock Code	Size		A (in)	L (in)	G (in)
	1	2			
79155	1/2"		0.882	2.244	1-1/4"
79160	3/4"		1.110	2.571	1-1/2"
79165	1"		1.004	2.571	1-1/2"
79170	1-1/4"		0.972	2.677	2"
79175	1-1/2"		1.012	3.110	2-1/4"
79180	2"		1.260	3.531	2-3/4"

Bronze Di-electric Union P x FNPT Model 2967

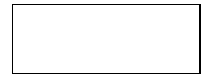
Stock Code	Size		A (in)	L (in)	G (in)
	1	2			
15558	1/2" x 1/2" NPT		0.961	2.244	1-1/4"
15568	3/4" x 3/4" NPT		1.110	2.571	1-1/2"
15553	1" x 1" NPT		1.004	2.571	1-1/2"
15548	1-1/4" x 1-1/4" NPT		0.972	2.677	2"
15543	1-1/2" x 1-1/2" NPT		1.004	3.102	2-1/4"
15563	2" x 2" NPT		1.260	3.531	2-3/4"

VIEGA • The global leader in plumbing, heating and pipe joining systems

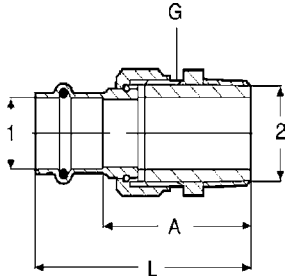
301 N. Main, 9th Floor • Wichita, KS 67202 • Ph: 800-976-9819 • Fax: 316-425-7618 • E-Mail: insidesales@viega.com • www.viega.com

Dimensional Documentation

viega



Bronze Union P x M NPT Model 2965ZL

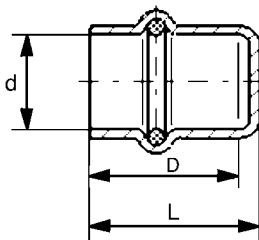


Stock Code	Size		A (in)	L (in)	G (in)
	1	2			
79730	1/2"		1.937	2.764	3/4"
79735	3/4"		1.996	2.902	1"
79740	1"		2.539	3.445	1-1/4"
79745	1-1/4"		2.492	3.516	1-1/2"
79750	1-1/2"		3.051	4.469	2"
79755	2"		2.992	4.567	2-1/2"

Bronze Union P x MNPT Model 2965

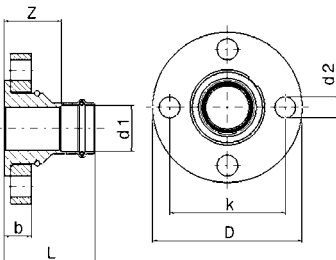
Stock Code	Size		A (in)	L (in)	G (in)
	1	2			
77782	1/2" x 1/2" NPT		2.087	2.835	3/4
77787	3/4" x 3/4" NPT		2.142	3.047	1
77792	1" x 1" NPT		2.732	3.638	1-1/4
77797	1-1/4" x 1-1/4" NPT		2.677	3.701	1-1/2
77802	1-1/2" x 1-1/2" NPT		3.228	4.646	2
77807	2" x 2" NPT		3.169	4.744	2-1/2

Copper Cap P Model 2956



Stock Code	Size	L (in)	D (in)
	d		
77712	1/2"	.917	0.799
77717	3/4"	1.067	0.945
77722	1"	1.110	0.992
77727	1-1/4"	1.181	1.024
77732	1-1/2"	1.622	1.465
77737	2"	1.811	1.575

Bronze Adapter Flange P x Flange Model 2959.5ZL



Stock Code	Size	L (in)	Z (in)	b1 (in)	b2 (in)	D (in)	K (in)	d2 (in)
	d1							
79680	1"	2.756	1.850	0.630	0.827	4.331	3.110	0.630
79685	1-1/4"	2.756	1.850	0.630	0.827	4.528	3.504	0.630
79690	1-1/2"	3.071	1.654	0.630	0.827	4.921	3.858	0.630
79695	2"	3.661	2.087	0.630	0.827	5.906	4.764	0.748

Bronze Adaptor Flange P x Flange Model 2959.5

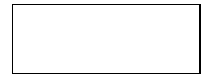
Stock Code	Size	L (in)	Z (in)	b1 (in)	b2 (in)	D (in)	K (in)	d2 (in)
	d1							
19708	1"	2.756	1.850	0.630	0.827	4.331	3.110	0.630
19713	1-1/4"	2.756	1.850	0.630	0.827	4.528	3.504	0.630
19718	1-1/2"	3.071	1.654	0.630	0.827	4.921	3.858	0.630
19723	2"	3.661	2.087	0.630	0.827	5.906	4.764	0.748

VIEGA • The global leader in plumbing, heating and pipe joining systems

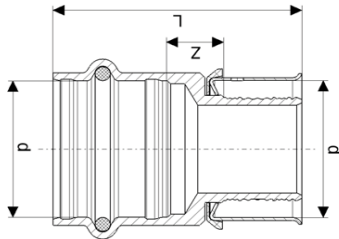
301 N. Main, 9th Floor • Wichita, KS 67202 • Ph: 800-976-9819 • Fax: 316-425-7618 • E-Mail: insidesales@viega.com • www.viega.com

Dimensional Documentation

viega

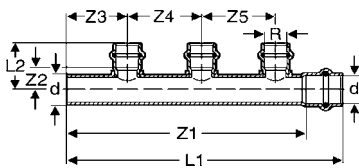


PEX Press Adapter PEX x P Model 2831PZL



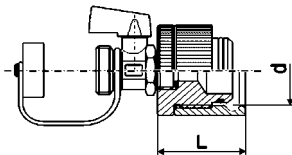
Stock Code	Size d	L (in)	Z (in)
99620	1/2"	0.291	1.614
99626	1/2" x 3/4"	0.429	1.831
99630	3/4" x 1/2"	0.232	1.555
99640	3/4"	0.331	1.732
99660	1"	0.453	1.969
99670	1-1/4"	0.492	2.382
99680	1-1/2"	0.591	2.874
99690	2"	0.583	3.209

Copper ProPress Manifold 3-Outlet (open) P x FTG x P Model 2845



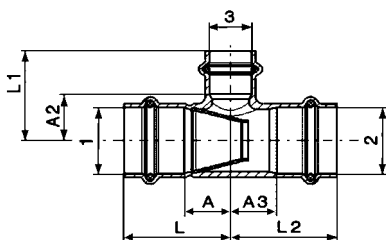
Stock Code	Size d x R	L1 (in)	L2 (in)	Z1 (in)	Z2 (in)	Z3 (in)	Z4 (in)	Z5 (in)
65803	1" x 1/2"	7.323	1.512	6.378	0.773	1.654	1.969	1.969

Bronze Pressure Test Plug Model 2969



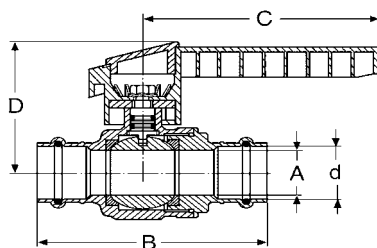
Stock Code	Size d	L (in)
78202	1/2"	1.654
78207	3/4"	1.654

Copper Venturi Tee P x P x P Model 2918.5



Stock Code	Size			A (in)	A2 (in)	A3 (in)	L (in)	L1 (in)	L2 (in)
	1	2	3						
23388	3/4"	3/4"	1/2"	0.689	0.630	0.433	1.594	1.378	1.594
23393	1"	1"	1/2"	0.689	0.787	0.689	1.594	1.535	1.594
23398	1"	1"	3/4"	0.846	0.748	0.591	1.752	1.654	1.752
23403	1-1/4"	1-1/4"	1/2"	0.650	0.925	0.650	1.673	1.673	1.673
23408	1-1/4"	1-1/4"	3/4"	0.768	0.866	0.768	1.791	1.772	1.791

Bronze ProPress Ball Valve - Plastic Handle P x P Model 2970



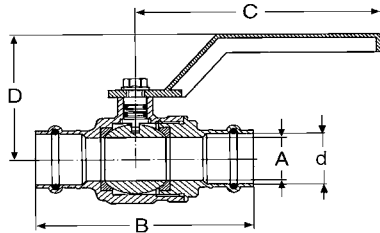
Stock Code	Size d	A (in)	B (in)	C (in)	D (in)
22053	1/2"	0.551	3.346	4.331	2.402
22058	3/4"	0.787	3.819	4.331	2.461
22063	1"	0.984	4.291	4.823	2.795
22068	1-1/4"	1.260	4.685	4.823	3.228
22073	1-1/2"	1.575	5.610	5.315	3.661
22078	2"	1.969	6.756	5.315	3.976

VIEGA • The global leader in plumbing, heating and pipe joining systems

301 N. Main, 9th Floor • Wichita, KS 67202 • Ph: 800-976-9819 • Fax: 316-425-7618 • E-Mail: insidesales@viega.com • www.viega.com

Dimensional Documentation

viega

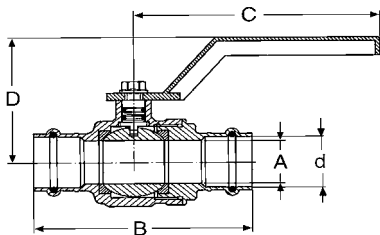


Bronze ProPress Ball Valve - Metal Handle P x P Model 2970.1ZL

Stock Code	Size	A (in)	B (in)	C (in)	D (in)
	d				
79095	1/2"	0.551	3.346	4.331	2.402
79100	3/4"	0.787	3.819	4.331	2.461
79105	1"	0.984	4.291	4.823	2.795
79110	1-1/4"	1.260	4.685	4.823	3.228
79115	1-1/2"	1.575	5.610	5.315	3.661
79120	2"	1.969	6.756	5.315	3.976

Bronze ProPress Ball Valve - Metal Handle P x P Model 2970.1

Stock Code	Size	A (in)	B (in)	C (in)	D (in)
	d				
22053	1/2"	0.551	3.346	4.331	2.402
22058	3/4"	0.787	3.819	4.331	2.461
22063	1"	0.984	4.291	4.823	2.795
22068	1-1/4"	1.260	4.685	4.823	3.228
22073	1-1/2"	1.575	5.610	5.315	3.661
22078	2"	1.969	6.756	5.315	3.976



Bronze ProPress Ball Valve - Stainless Trim P x P Model 2970.3ZL

Stock Code	Size	A (in)	B (in)	C (in)	D (in)
	d				
79820	1/2"	0.551	3.346	4.331	2.402
79825	3/4"	0.787	3.819	4.331	2.461
79830	1"	0.984	4.291	4.823	2.795
79835	1-1/4"	1.260	4.685	4.823	3.228
79840	1-1/2"	1.575	5.610	5.315	3.661
79845	2"	1.969	6.756	5.315	3.976

Bronze ProPress Ball Valve - Stainless Trim P x P Model 2970.3

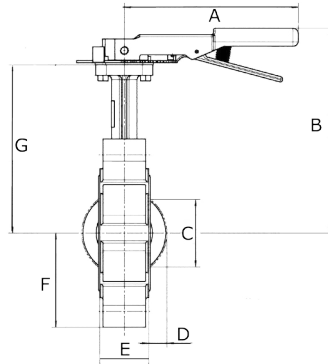
Stock Code	Size	A (in)	B (in)	C (in)	D (in)
	d				
22054	1/2"	0.551	3.346	4.331	2.402
22059	3/4"	0.787	3.819	4.331	2.461
22064	1"	0.984	4.291	4.823	2.795
22069	1-1/4"	1.260	4.685	4.823	3.228
22074	1-1/2"	1.575	5.610	5.315	3.661
22080	2"	1.969	6.756	5.315	3.976

VIEGA • The global leader in plumbing, heating and pipe joining systems

301 N. Main, 9th Floor • Wichita, KS 67202 • Ph: 800-976-9819 • Fax: 316-425-7618 • E-Mail: insidesales@viega.com • www.viega.com

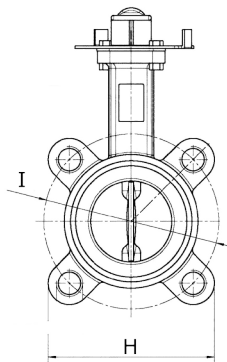
Dimensional Documentation

viega

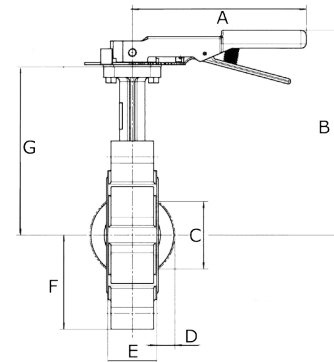


Butterfly Valve Model 2873.81

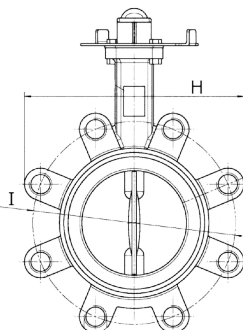
Stock Code	Size	A (in)	B (in)	C (in)	D (in)	E (in)	F (in)	G (in)	H (in)	I (in)
	d									
22074	2-1/2"	6.496	7.401	2.165	0.433	1.811	2.637	5.354	5.196	5.511
22075	3"	6.496	7.637	2.795	0.669	1.811	2.819	5.590	7.007	5.984



Butterfly Valve Model 2873.81



Stock Code	Size	A (in)	B (in)	C (in)	D (in)	E (in)	F (in)	G (in)	H (in)	I (in)
	d									
22076	4"	9.055	8.464	3.543	0.905	2.047	3.622	6.417	8.267	7.48

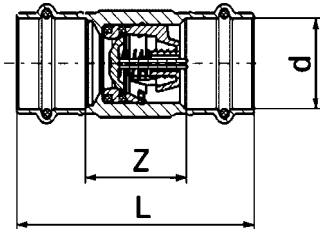


VIEGA • The global leader in plumbing, heating and pipe joining systems

301 N. Main, 9th Floor • Wichita, KS 67202 • Ph: 800-976-9819 • Fax: 316-425-7618 • E-Mail: insidesales@viega.com • www.viega.com

Dimensional Documentation

viega

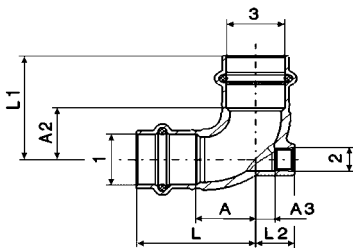


Bronze Check Valve P x P Model 2974ZL

Stock Code	Size d	Z (in)	L (in)
79035	1/2"	0.086	2.362
79040	3/4"	1.142	2.953
79045	1"	1.339	3.150
79050	1-1/4"	1.693	3.740
79055	1-1/2"	2.087	4.921
79060	2"	2.559	5.709

Bronze Check Valve P x P Model 2974

Stock Code	Size d	Z (in)	L (in)
22353	1/2"	0.086	2.362
22358	3/4"	1.142	2.953
22363	1"	1.339	3.150
22368	1-1/4"	1.693	3.740
22373	1-1/2"	2.087	4.921
22378	2"	2.559	5.709



Bronze Vent Tee P x FNPT x P Model 2917.3ZL

Stock Code	Size			A (in)	A2 (in)	A3 (in)	L (in)	L1 (in)	L2 (in)
	1	2	3						
79635	1/2"	1/8"	1/2"	0.669	0.669	0.437	1.496	1.496	0.709
79640	3/4"	1/8"	1/2"	0.827	0.827	0.535	1.732	1.732	0.807

Bronze Vent Tee P x FNPT x P Model 2917.3

Stock Code	Size			A (in)	A2 (in)	A3 (in)	L (in)	L1 (in)	L2 (in)
	1	2	3						
14573	1/2"	1/8"	1/2"	0.748	0.748	0.315	1.496	1.496	0.591
14578	3/4"	1/8"	3/4"	0.906	0.906	0.315	1.811	1.811	0.591

VIEGA • The global leader in plumbing, heating and pipe joining systems

301 N. Main, 9th Floor • Wichita, KS 67202 • Ph: 800-976-9819 • Fax: 316-425-7618 • E-Mail: insidesales@viega.com • www.viega.com